

Patronusens® 3D Sensor

Situation Sensor and Assistant
Artificial Intelligence Powered
Omnidirectional 3D



Perimeter 3D capturing and AI model-based understanding of peoples situations in spaces:

- Emergency detection
- Detection of fall
- Detection of akinesia
- Detection of loitering
- Vandalism detection
- Number of persons
- Intrusion detection
- Gesture recognition
- Gaze recognition
- Pose recognition

Application areas:

- Residential spaces
 - Private homes and tenements
 - Hospitals and nursing homes
- Public spaces
 - Office buildings
 - Self-service areas
 - Event locations
 - Parks
- Workplaces
 - Single-person workplaces
 - Human-machine workplaces



Space-wise
Safety
Security
Guidance
Comfort
for people

Applications via
Software Apps

Privacy preservation through edge AI-processing of data.



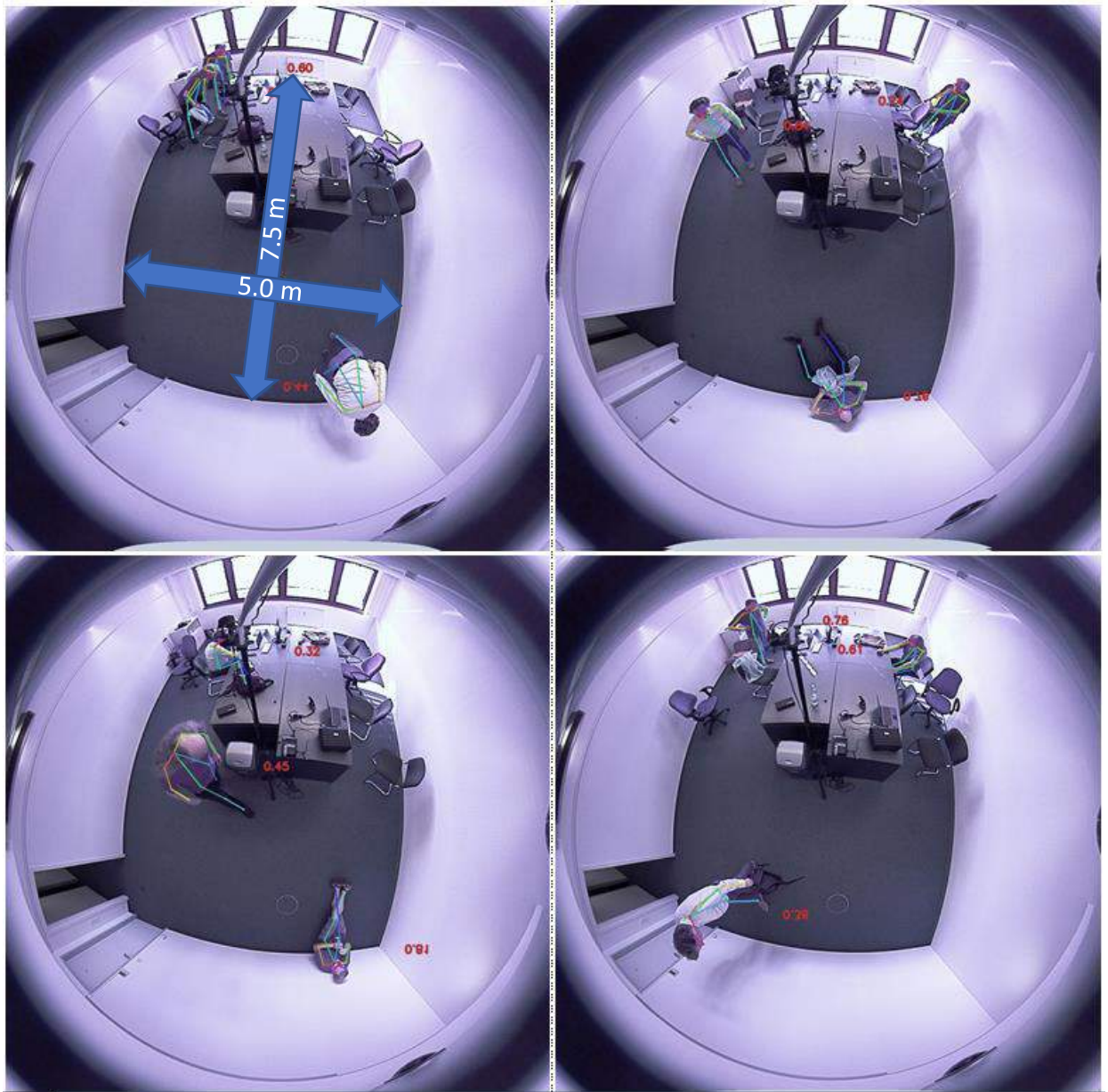
Patronusens[®] 3D Sensor

Situation Sensor and Assistant
Artificial Intelligence Powered
Omnidirectional 3D



Perimeter 3D capturing and AI model-based understanding of peoples situations in spaces

Large area coverage, all possible poses, partial occlusion



Patronusens® 2D/3D Sensor

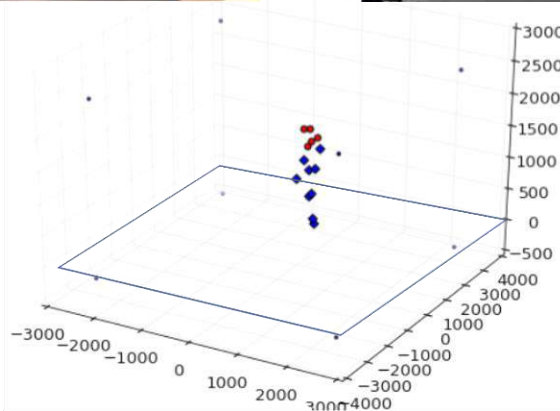
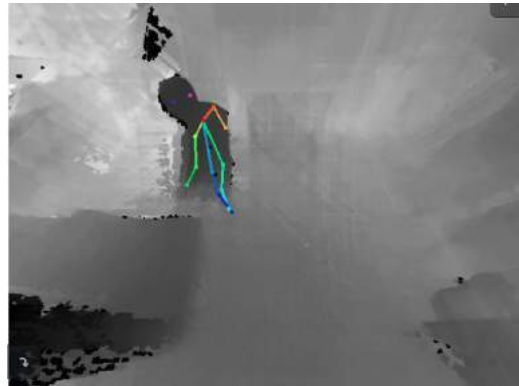
Situation Sensor and Assistant
Artificial Intelligence Powered
Omnidirectional 2D/3D



Perimeter 3D capturing and AI model-based understanding of peoples situations in spaces



2D/3D information fusion



Technical data

Application ready: Mount & Run by self-calibration and self-adjustment

3D Vision Performance

- Hemispherical RGB-D sensor
- Field of view: 90° x 360°
- 5 MP high resolution lenses

Resolution

- high image resolution, 1200x1200
- high lateral angular resolution of 10 μ sr (~1024x1024)
- high axial depth resolution of 25cm@5m

