

Patronusens® 2D Sensor

Situation Sensor and Assistant
Artificial Intelligence Powered
Omnidirectional 2D

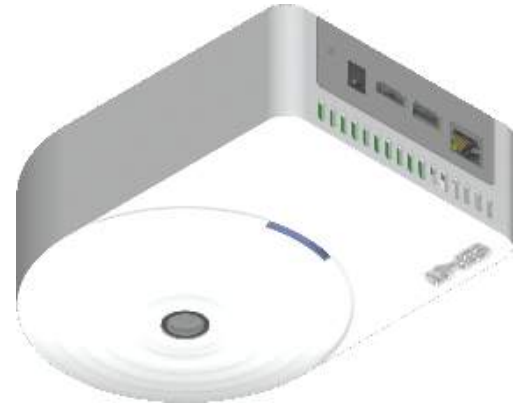


Perimeter 2D capturing and AI model-based understanding of peoples situations in spaces:

- People presence
- Environment object recognition
- People queue length measurement
- 2D motion analysis
- Facial expression
- Gender/age estimation
- Gesture recognition

Application areas:

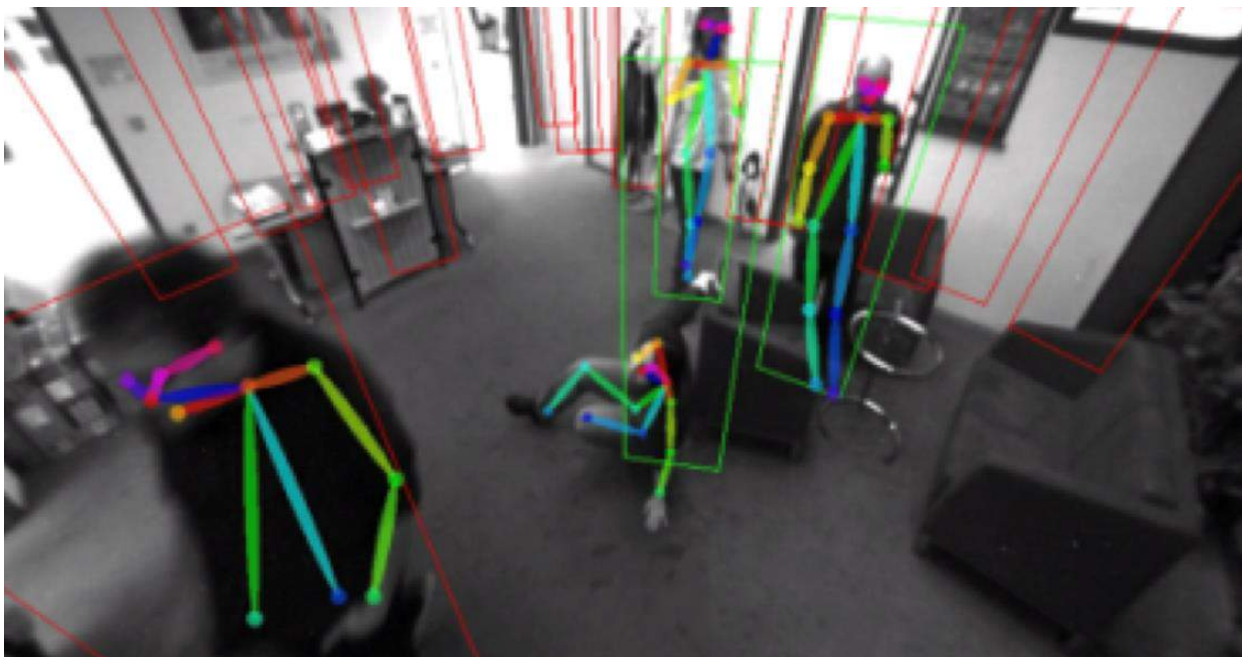
- Residential spaces
 - Private homes and tenements
 - Hospitals and nursing homes
- Public spaces
 - Office buildings
 - Service areas
 - Event locations
 - Parks
- Workplaces
 - Activity monitoring
 - Human-machine cooperation



**Space-wise
Information
Guidance
Comfort
for people**

Applications via
software Apps

Privacy preservation through edge AI-processing of data.

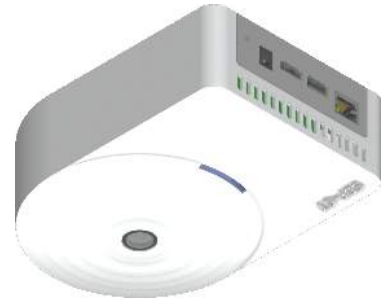


Patronusens[®] 2D Sensor

Situation Sensor and Assistant
Artificial Intelligence Powered
Omnidirectional 2D



Perimeter 2D capturing and AI model-based understanding of peoples situations in spaces



Virtual perspective views



Technical data

Application ready: Mount & Run by self-adjustment

2D Vision Performance

- Hemispherical RGB-D sensor
- Field of view: 90° x 360°
- 5 MP high resolution lenses

Resolution

- high image resolution, 1200x1200
- high lateral angular resolution of 10 μ sr (~1024x1024)

